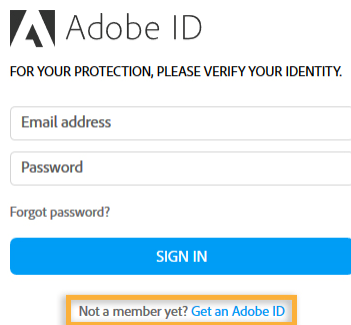


Adobe Creative Cloud Subscriptions for Students

1. Create an Adobe ID which is free, at <http://adobe.com> . You can choose to use your Curtin email address or any other that you want **. Skip this step if you are using the redemption code to renew an Adobe Creative Cloud subscription, as you will already have an Adobe ID.
2. To create an Adobe ID for the first time .Go to [Adobe accounts](#) and click get an Adobe ID.



Adobe ID

FOR YOUR PROTECTION, PLEASE VERIFY YOUR IDENTITY.

Email address

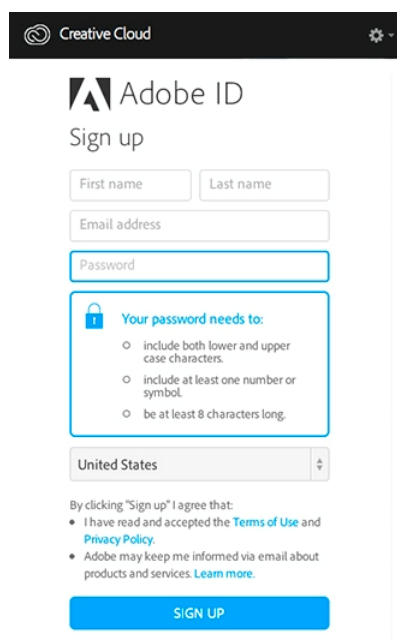
Password

Forgot password?

SIGN IN

Not a member yet? [Get an Adobe ID](#)

Follow the online instructions. The email address you enter on the Sign up page will be your Adobe ID, so use an address you'll remember. Click **Sign Up**.



Creative Cloud

Adobe ID

Sign up

First name Last name

Email address

Password

Your password needs to:

- include both lower and upper case characters.
- include at least one number or symbol.
- be at least 8 characters long.

United States

By clicking "Sign up" I agree that:

- I have read and accepted the [Terms of Use](#) and [Privacy Policy](#).
- Adobe may keep me informed via email about products and services. [Learn more](#).

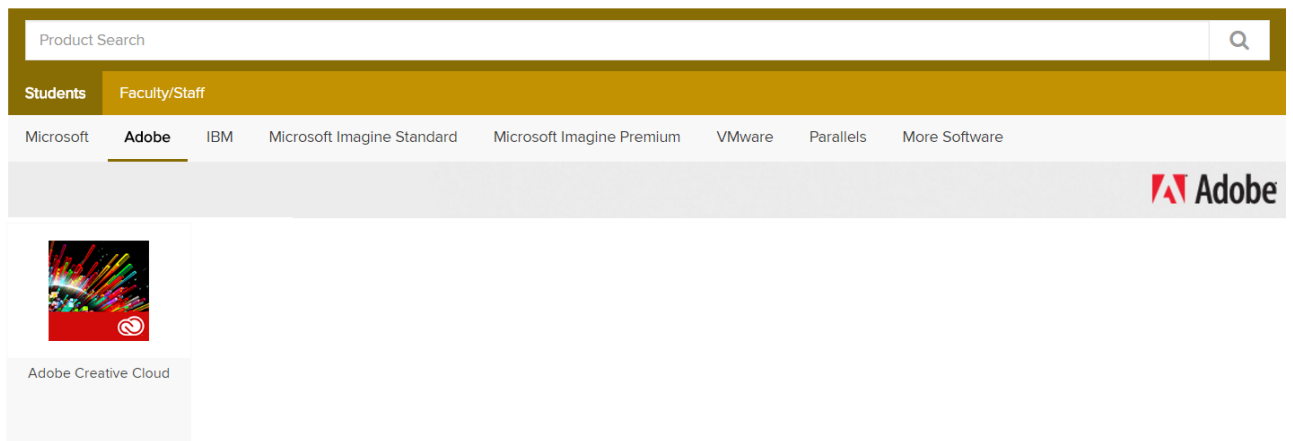
SIGN UP

You're now ready to get started managing your Adobe ID account.

From now on you can sign in to your account any time using the navigation bar on Adobe.com pages. To do so, go to www.adobe.com and click **Sign In**. The sign in link is in the top navigation bar of most pages.



3. Purchase a redemption code from <https://curtin.onthehub.com/>. You need to provide your Curtin University student email address to verify your eligibility for the student BYOD program.
4. Click on the Student tab and then Adobe and choose Adobe Creative Cloud



5. Follow the on screen instructions to complete the purchase by making the payment.
6. Kivuto (the provider of the redemption code service) will send you an email with the details of the redemption code, and a link to redeem the code, which is <https://creative.adobe.com/educard/wah>. See image below.

A screenshot of the Adobe ID sign-up page. The page features the Adobe ID logo and the text 'SIGN UP TO CONTINUE'. Below this, there is a heading 'Redeem your Creative Cloud Membership' with a red circular icon. The form includes input fields for 'First name', 'Last name', 'Email address', and 'Password'. There is also a dropdown menu for 'Australia'. Below the form, there are two checkboxes: 'Stay informed about Adobe products and services. Learn more.' and 'I have read and agree to the Terms of Use and Privacy Policy.'. A blue 'SIGN UP' button is positioned below the checkboxes. At the bottom, there is a link 'Already have an Adobe ID? Sign In' and a 'Secure Server' icon with the text 'Tell me more'.

7. Sign up, if you haven't already, or click on the **Sign In** link, then enter you redemption code. If you are already signed in to <http://adobe.com> you will go directly to the Redeem page, see image below.

A screenshot of the Adobe 'Redeem a redemption code' page. The page has a red circular icon and the heading 'Redeem a redemption code'. Below the heading, there are three numbered steps: 1. 'Signed in as', 2. 'Enter your redemption code', and 3. 'Start using Creative Cloud'. Step 2 includes a row of six input boxes for the redemption code and a grey 'Activate Membership' button below them.

8. Enter your redemption code and click to Activate Membership.
9. Enjoy using your Adobe products and services.

**** You only require an Adobe ID for an Adobe Creative Cloud subscription.**

*** Your Adobe ID is not associated with the University and you can still use it if you are no longer a student of Curtin University, although use of Adobe products and subscriptions obtained via Curtin University must stop immediately if you are no longer a student. You can renew your subscription by purchasing it from retail or from Adobe, after you leave Curtin University and keep the same Adobe ID if you wish.**

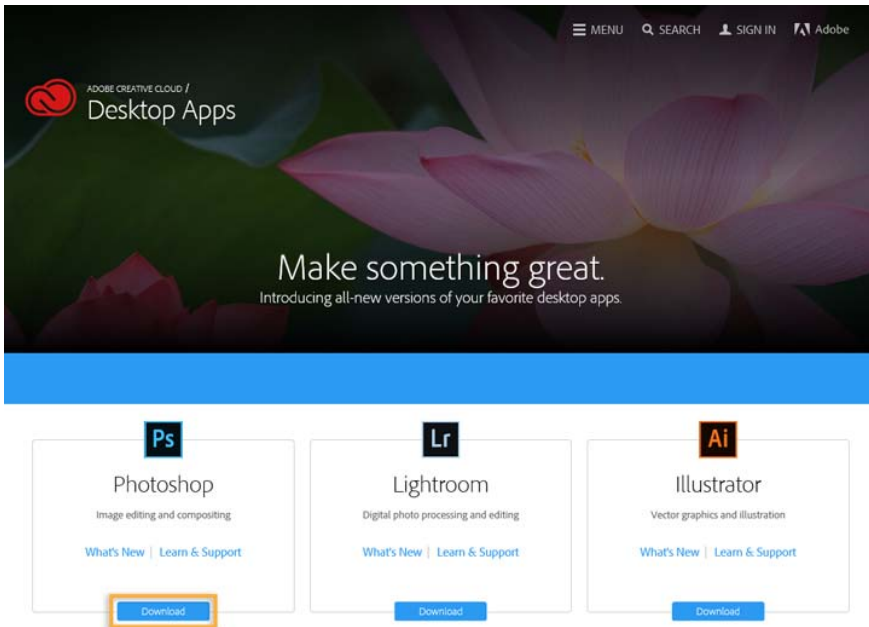
Frequently Asked Questions:

- **Is getting a new redemption code on the Kivuto managed 'On The Hub' site the same as renewing the Adobe Creative Cloud subscription?**
 - No, the redemption code needs to be applied to your Adobe Creative Cloud subscription to renew it.
- **Where do I apply the redemption code?**
 - When you receive the confirmation email from Kivuto there is a link to Redeem Now. Click on that link to apply the redemption code to your Adobe Creative Cloud subscription, renewing it for another year. The link is also on the web page when you obtained the redemption code - <https://creative.adobe.com/educard/wah>.
- **How long do I have to use the redemption code?**
 - Redemption codes are valid for one year from the day you obtained the code. They can be applied to your Adobe Creative Cloud subscription any time before they expire.
- **When can I get another redemption code?**
 - A new redemption code cannot be supplied until a year after the previous code was provided.
- **What Adobe products are not subscription?**
 - Only the Adobe Creative Cloud is a subscription, all other available Adobe products available on <https://curtin.onthehub.com/> are for the term of the licensing agreement between Adobe and Curtin University; however if you cease to be a student of Curtin University you are no longer entitled to use the products – their use is conditional on being a student of the Curtin University.
- **How long is the Adobe Creative Cloud subscription?**
 - The Adobe Creative Cloud subscription is valid for one year after applying a redemption code.
 - If the redemption code is applied on the day it was obtained, the Adobe Creative Cloud subscription and the redemption code expire at the same time. You must wait for the year to pass before obtaining a new redemption code and renewing your Adobe Creative Cloud subscription.
 - If applying the redemption code to an Adobe Creative Cloud subscription days, or even weeks, after it was provided (i.e. within the time frame it is valid) you can obtain a new redemption code before the Adobe Creative Cloud subscription expires.
- **What happens if I apply the redemption code before my Adobe Creative Cloud subscription ends?**
 - A year will be added from the end of the current subscription renewal date. For example, if your subscription ends on June 6 and you apply the redemption code on May 25 the next renewal date will be June 6 the following year.
- **How do I know when my Adobe Creative Cloud subscription will end?**
 - You can check by signing into <http://adobe.com> and check in the *Manage Account* link, the renewal date is displayed under *Plans & Products*
 - The Adobe Creative Cloud products will also start to display notification messages a week or 2 before your subscription ends.
- **Do I follow the links in the messages about my subscription ending to renew it?**
 - No, if you're still entitled as a student of Curtin University then use the process described above to obtain a new redemption code.
 - Yes, if you are no longer a student of Curtin University and want to continue your subscription privately.
- **Will the Adobe products stop working when my subscription ends?**
 - There is a 30 day grace period after the Adobe Creative Cloud subscription expires where the products are still available for use, providing you lots of time to obtain a new redemption code and renew your Adobe Creative Cloud subscription.
- **What happens if the grace period ends before I apply a new redemption code?**

- If the grace period passes and you haven't renewed, don't worry – you can apply a redemption code to your adobe.com account to reactivate your Adobe Creative Cloud subscription and products at any time.
- **How do I install Adobe Creative Cloud apps?**

To get started, simply download your first app from the Adobe website. The Creative Cloud desktop app – which you will use to manage future downloads – is installed at the same time. Follow instructions below:

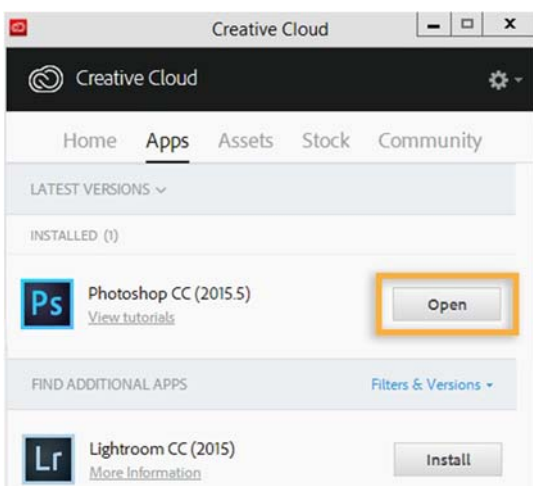
Sign in to <http://adobe.com> and under *Desktop Downloads* or go to the [Adobe Creative Cloud apps catalogue](#).. Find an app you want to download, such as Photoshop.



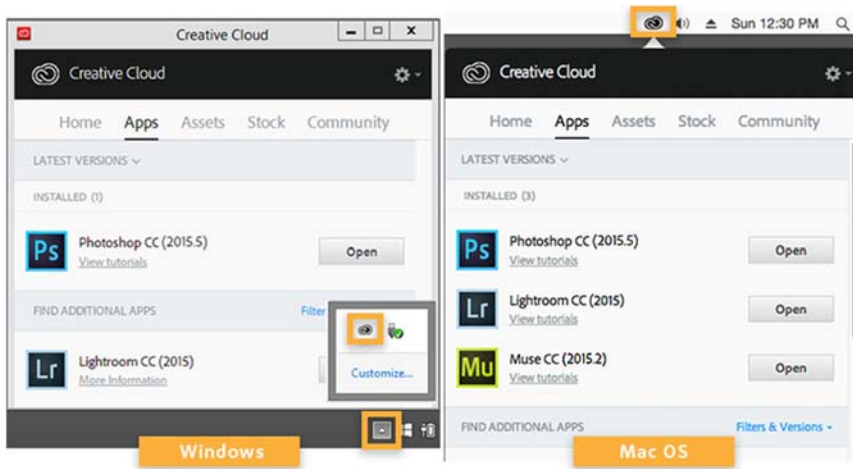
Click **Download** to install the app you want. If you are not signed in, you are asked to sign in with your **Adobe ID** and password. Follow the onscreen instructions. Your app begins to download.

At the same time, the Creative Cloud desktop app appears, and it manages the rest of the installation process. Check your download progress in the status bar next to the app's name.

To launch your new app, find the application's icon in the **Apps** panel and click **Open**. You can also launch your new app the same way you normally launch any app on your computer. Your new app is installed in the same location where your applications are normally installed, such as Program Files folder (Windows) or the Applications folder (Mac OS).



Once you've downloaded your first app, you can now use the **Creative Cloud desktop app** to browse and install the other Adobe apps that you want to use. The **Creative Cloud desktop app** is accessed by clicking on the **Creative Cloud icon**, located in the taskbar (Windows) or Apple menu bar (Mac OS).



Note : If you in the you don't see the Creative Cloud icon, you may have quit the application. You can relaunch it :

- Windows: Choose Start > Programs > Adobe Creative Cloud.
- Mac OS: Choose Go > Applications > Adobe Creative Cloud > Adobe Creative Cloud.